



SPALLIAN

REVEALING DATA

PREFACE

Control over data has long been a strategic issue at least as important as control over energy resources. Healthcare, transportation, environment, business strategy - no area of activity, whether public or private, can now escape the imperatives of data collection and interpretation.

Data science poses new challenges, which can only be overcome using powerful technologies that are open to disruptive innovations such as AI.

SPALLIAN was founded to deliver a sovereign French technology built on three fundamentals:

- The data we collect is systematically validated and strengthened by our data analysts
- Our solutions are developed entirely by our engineers, ensuring technological independence.
- We devote 15% of our annual revenue to innovation, and work to democratise access to data through our Data Lab.

Confronted with the challenges of digitalizing our territories and economies, let us take the initiative to shape the future.

Renaud PROUEUR

Chief Executive Officer





SUMMARY

ABOUT US	7
OUR DNA	7
OUR DIFFERENCE AND VALUES	10
DISRUPTIVE INNOVATION	13
REVEALING DATA	15
1 - Data-driven local governance	17
2 - Targeting territorial investment with data	21
3 - Coordinatig commercial efforts with data	25
4 - From using data to creating it	29
OUR COMMITMENTS	33
PATRONAGE AND SPONSORSHIP	34
CONTACTS	36



ABOUT US

Committed to innovation for the benefit of territories, we promote open data and unlock the value of our clients' data assets using our software : SPALLIAN APPLICATION BUILDER.

We also provide participatory data creation tools, such as the citizen app *thelma*.



OUR DNA

Revealing data
since 1998

A company specializing in territorial intelligence
that supports its public and private clients in
implementing a unique and innovative data strategy.

A 100% French and 100% independent
company



79.28 %
Renaud Prouveur, founder and CEO

14.12 %
Employees

6.6 %
Private shareholders

OUR DIFFERENCE & VALUES

3 areas of expertise to reveal
the intelligence of data

DATA ANALYSIS

Expertise in enhancing data and
ensuring its reliability



Ethics & data
protection

*A team of data analysts is
assigned to each project to
identify and secure reliable data.*

SOFTWARE DEVELOPMENT

Innovative solutions to ensure
technological sovereignty



Audacity
& innovation

*We use our own technology to
develop our solutions:*
SPALLIAN APPLICATION BUILDER

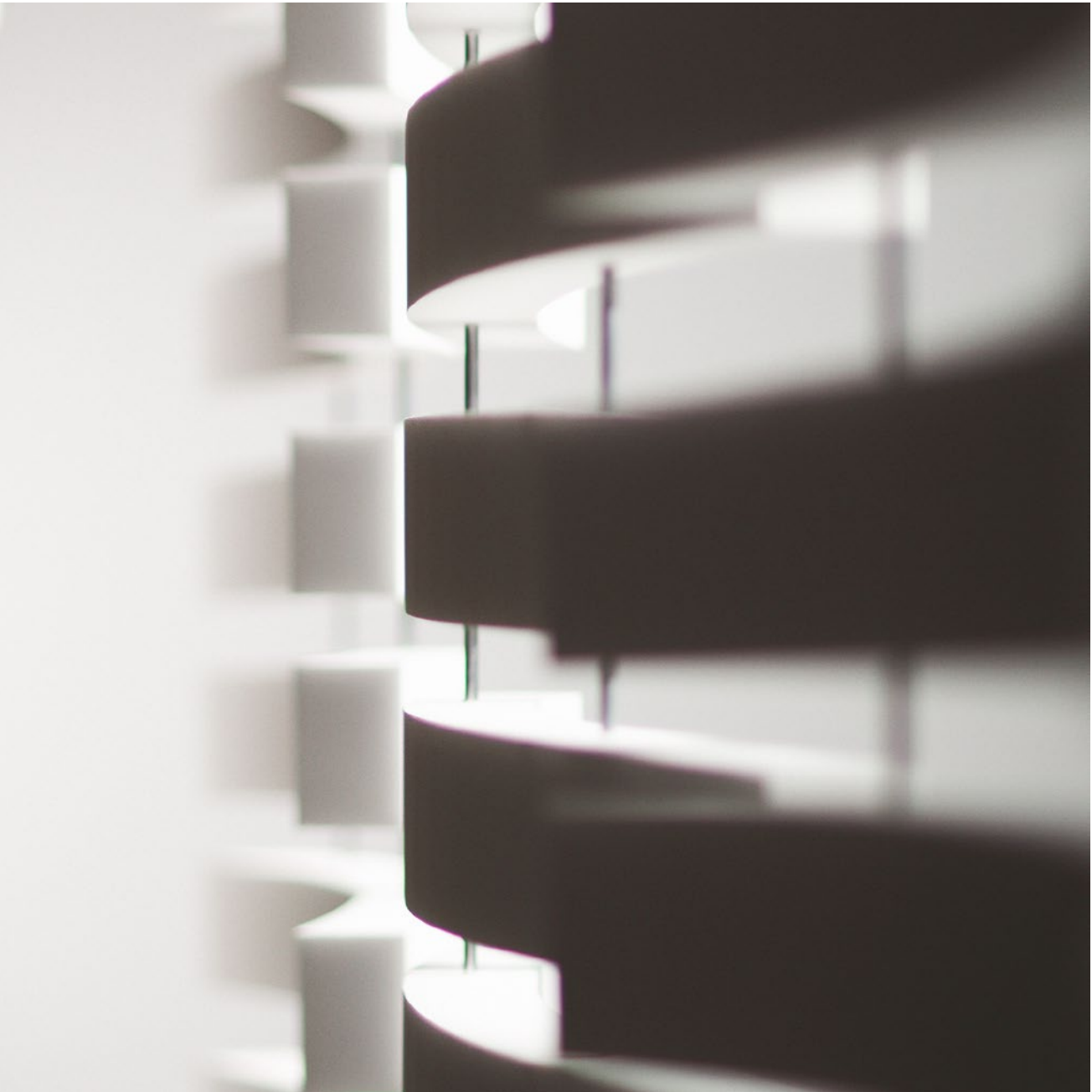
STRATEGIC ADVISORY

Understanding and supporting
the use of data



Independence
& commitment

*Our business consultants support
you in interpreting the data.*





A DISRUPTIVE INNOVATION

SPALLIAN APPLICATION BUILDER (SAB)

By offering its own 100% French software, SPALLIAN guarantees an ethical, secure and pragmatic use of data.

Our technology makes it possible to build, in low-code, web applications that read or write data. It is an alternative both to rigid line-of-business softwares and to classic business-intelligence stacks.

SAB offers great flexibility to query, enrich, visualise, map and analyse datasets through dashboards designed for clarity and ease of use.

With SAB, we design bespoke, reliable, and scalable solutions while meeting the timeline and budget initially defined.

Key features

- | | |
|--|---|
| ✓ Dynamic statistical visualizations | ✓ Data transformation and built-in algorithmic routines |
| ✓ Exports : data visualizations (.jpg), statistical reports (.pdf) and raw data (.csv) | ✓ Detailed configuration of user profiles and permissions |
| ✓ Advanced web mapping | ✓ Forms for data creation |
| ✓ Data imports and structured pipelines | ✓ Editorialization, custom graphic template, and white labeling |

OUR METHODOLOGY

In order to ensure our solution truly fits your operational needs, and to commit to a firm, all-inclusive budget

Phase 1 Requirements specification

- Stakeholders interviews
- Document collection and analysis
- Data inventory, qualification and selection
- Co-creation workshops
- UX/UI and functional prototyping
- Project specification

Phase 2 Development and Deployment

- Data acquisition and quality assurance
- Systems integration and automations
- Interface and KPI development, algorithms overview
- Training and documentation
- Assistance and support
- Maintenance and updates

Our edge: data

Before any analysis, our teams consolidate, validate and clean the data, whether open, third-party or client-provided. We also maintain a substantial, high-quality open-data portfolio and a proven delivery method that our clients can leverage from day one.





SPALLIAN, REVEALING DATA

SELECTED CASE STUDIES



1 DATA-DRIVEN LOCAL GOVERNANCE

From service delivery management
to government transparency



BANQUE DES TERRITOIRES, GROUPE CAISSE DES DÉPÔTS

«SMALL TOWN OF TOMORROW»

Initiative launched by the French government to revitalise towns under 20,000 inhabitants, with a €3bn budget.

Technical challenge

Building data literacy among public decision-makers to address territorial governance challenges. Developing a monitoring and evaluation solution for program impact.

Our contribution

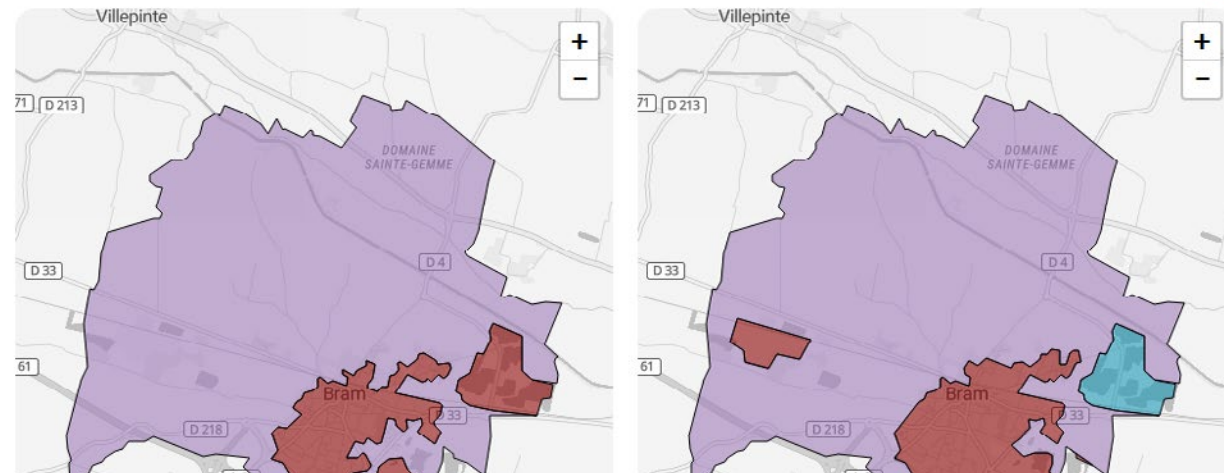
Developing a platform that equips project managers while remaining open to the public: [Dataviz PVD](#)

300

weekly visits on average

ÉVOLUTION

Répartition des sols en 2006 et en 2018 à Bram (11)



GOVERNMENT OF ALBANIA OPEN DAT'AL

Co-developed with Albania's territorial agency and the French Embassy: a data platform to boost economic attractiveness and public transparency.

Political challenge

To enable a new model of data-driven governance, make public investment targeting more precise and prepare the path towards Europe for Albanian cities.

Our contribution

Support to the Government of Albania in establishing national open data and in creating an interactive data-access platform with a custom visual identity.

4%

average GDP growth over the last three years.



2 – A FRENCH-ALBANIAN PARTNERSHIP

Objective

To establish cooperation between French and Albanian local authorities for mutual enrichment through the promotion of open data for regional development and information transparency.

The existing partnership between Chambéry and Korça encourages us to continue along this path by proposing a French partner for exchange and cooperation between each city participating in the project.



Korça and Chambéry is an existing partnership since 2024



2 TARGETING TERRITORIAL INVESTMENT WITH DATA

To anticipate future needs and control budgets



SYCTOM

DATA MANAGEMENT AND VALUE CREATION

Syctom provides household-waste treatment and recovery for 81 municipalities in Île-de-France, processing 2.2 million tonnes a year and converting it into materials and energy.

Societal challenge

Embedding a data culture through an innovative solution addressing two major goals:

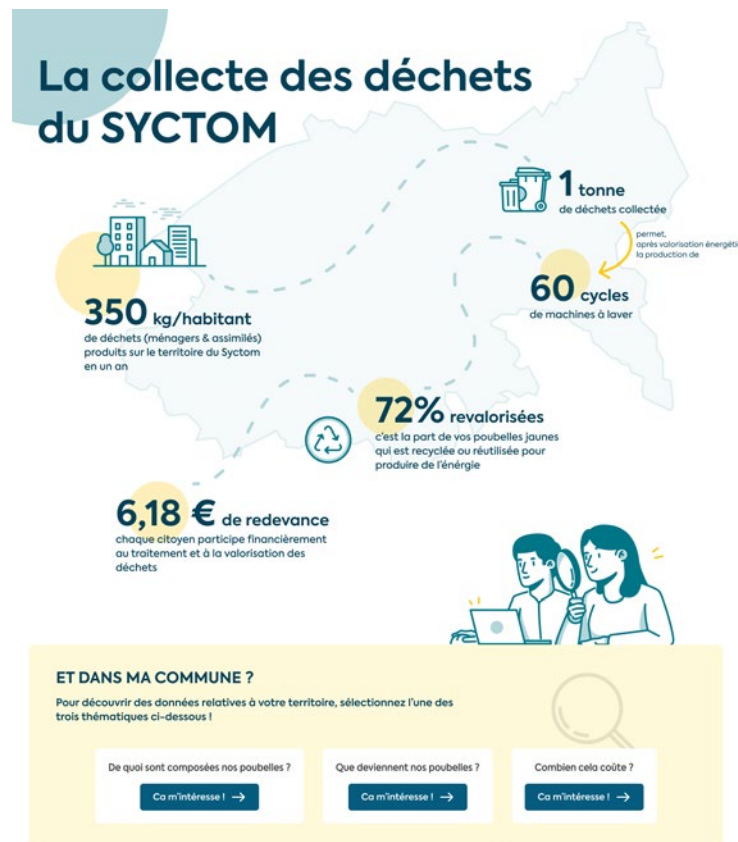
- To develop a public open-data platform integrated into the website to report on actions and raise public awareness.
- To leverage internal data and build a decision-support tool.

Our contribution

We supported Syctom in creating a tailored solution that strengthens data-driven practices in the environmental field.

5,7 million

citizens covered by Syctom's services



ACTION LOGEMENT

ALIDATA & ALITRANQUIL

For nearly seventy years, Action Logement, France's leading social and intermediate housing group, has been facilitating access to housing to support employment for nearly seventy years.

01

PORTRAIT GÉNÉRAL DU TERRITOIRE

A- Informations générales

Nom du président d'EPCI

Crescent MARAULT

Nom du maire de la ville centre

Crescent MARAULT



Programme local de l'habitat



Action et aide financière en faveur du logement social

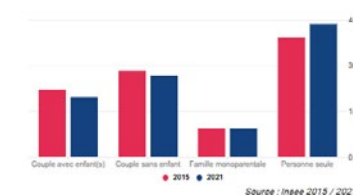


Délégations des aides à la pierre

Part de logements occupés par leur propriétaire / locataires du parc privé / locataires du parc social



Composition des ménages



Revenu médian par unité de consommation



Taille moyenne des ménages en 2015



Taille moyenne des ménages en 2021



CSP de la population



Strategic challenge

To create two solutions dedicated to estate management and investment strategy, and bring subsidiaries together around a shared data-management culture.

Our contribution

ALITranquil : an application for reporting and analysing incidents to assess their impacts on residents and property.

ALIData : a geospatial intelligence platform to prioritise investment in social and intermediate housing.

1,14 million

social and intermediate housing units within the group in 2025.



3 COORDINATING COMMERCIAL EFFORTS WITH DATA

Driving foresight and competitiveness



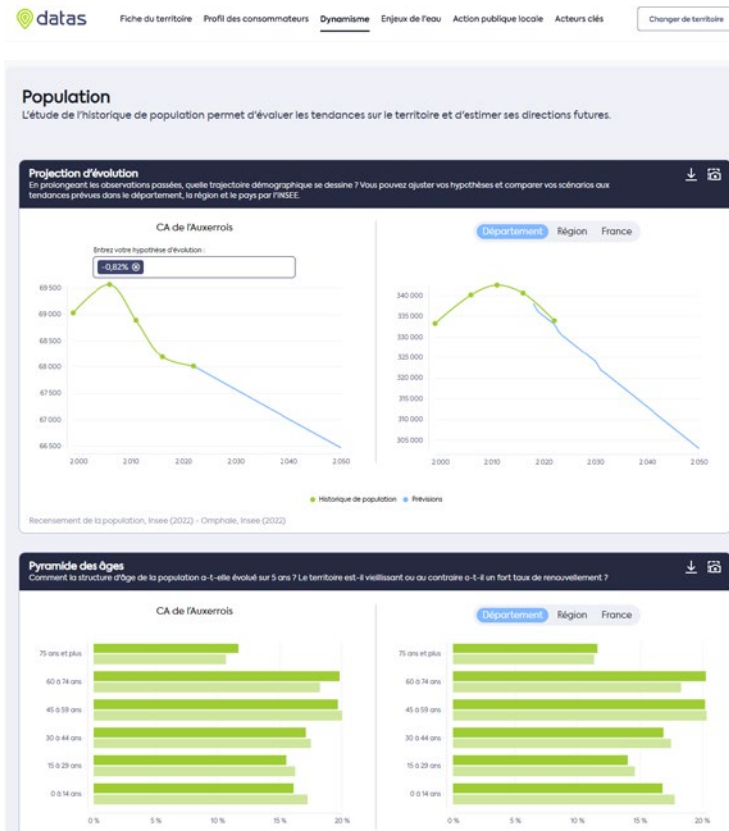
SUEZ TERRITORY ANALYSIS & ANTICIPATION DASHBOARD

With a workforce of 28,000 and drinking-water services reaching 10.4 million residents, SUEZ helps strengthen local attractiveness in France and supports its clients' sustainable development.



ALPES MARITIMES CCI DEPARTMENTAL ECONOMIC OBSERVATORY

The Nice Côte d'Azur Chamber of Commerce and Industry is a state public institution operating under the authority of the Ministry for the Economy. As a partner to local authorities, the Chamber undertakes a wide range of activities in support of territorial economic development.



Managerial challenge

To develop a territorial-intelligence solution as an alternative to traditional CRMs, addressing the following needs:

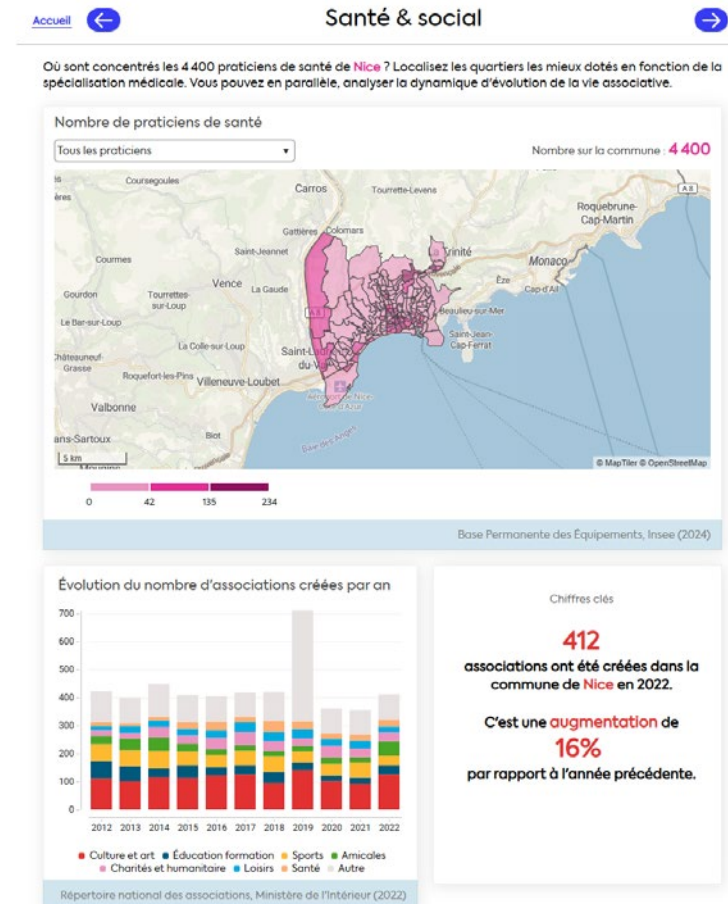
- Understanding the socio-economic dynamics of territories;
- Strengthening responses to calls for tenders;
- Anticipating the future needs of local authorities.

Our contribution

A tailor-made solution called “datas,” («Dashboard d'Analyse des Territoires et d'Anticipation Suez», meaning “Suez Territorial Analysis and Forecasting Dashboard”), was developed in collaboration with representatives from the Suez sales division.

< 6 months

Development time after validation of a mock-up co-designed with users



Marketing challenge

- To provide businesses and local authorities with socio-demographic insights to reinforce territorial attractiveness;
- To increase website traffic through an interactive ‘data’ solution and promote the Chamber’s advisory services.

Our contribution

Integration of an ‘open data portal’ on the Chamber’s website.

1,500 visits

to the open-data portal in the first months after launch.



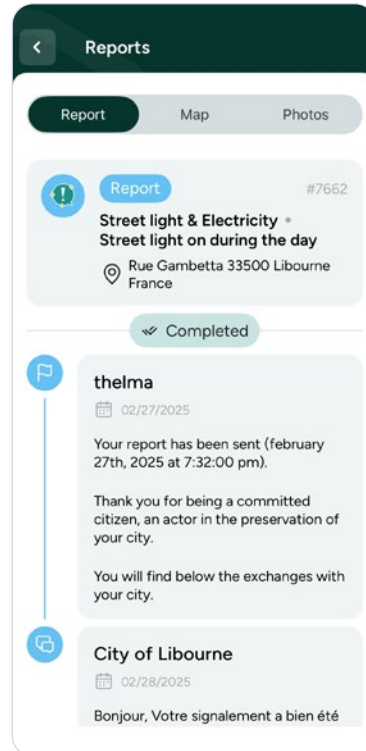
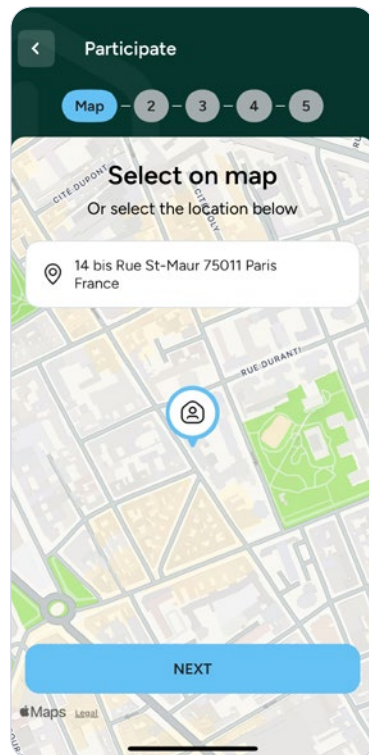
4 FROM USING DATA TO CREATING IT

To participate and engage



THELMA A CIVIC APP FOR PROTECTING SHARED SPACES

Because an app alone cannot fully solve urban issues, SPALLIAN through the thelma® programme helps cities organise coordinated initiatives to improve quality of life.



Environnemental challenge

To inform, alert, engage!
Thelma is the solution for environmental whistle-blowers. It enables anyone to report environmental incidents observed in natural areas.

Our contribution

Development of a comprehensive programme to enhance public spaces, including:
-A mobile application that brings together a community of engaged citizens;
-A real-time case-management platform;
-A statistical dashboard accessible to elected officials.

A first in France

The first French application to sign a partnership with COP15.



SPALLIAN CITY OPEN DATA (SCOD) SIMPLE, RELIABLE GOVERNANCE TOOL

SCOD is the French answer to boosting your area's attractiveness. It provides a range of strategic data, giving you a big picture and benchmarking local governments across topics like education, economy, housing, voter turnout, and more.

Citizen challenge

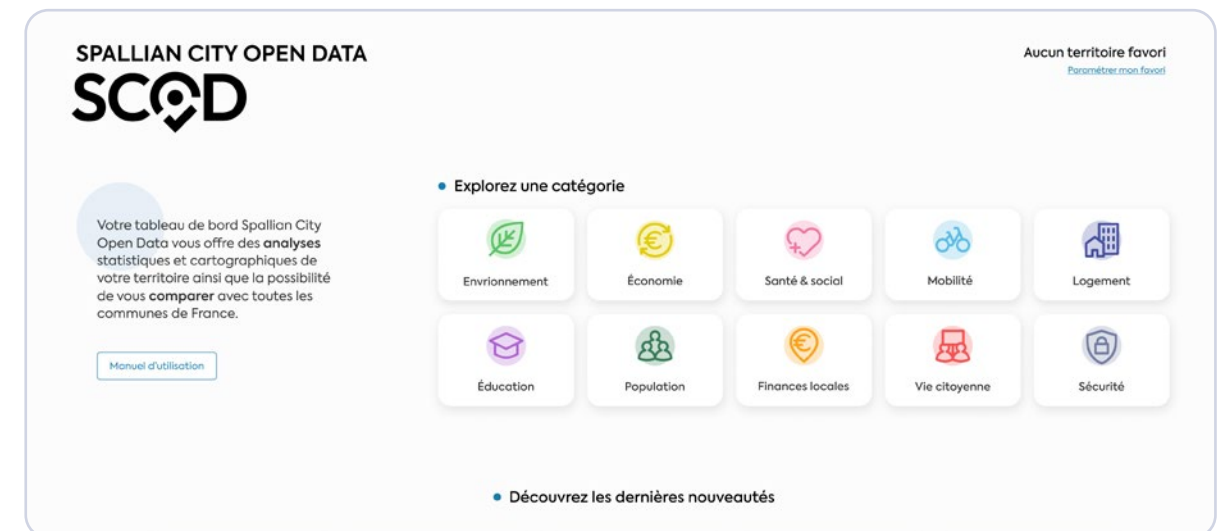
Running services and implementing public policies require a 360° view of territorial change and citizens' expectations.

Our contribution

In order to support local authorities in promoting, understanding, and exploiting their data assets, SPALLIAN has used its SAB technology to develop a range of innovative solutions for regional governance.

1st and 2nd

France ranks 1st in Europe and 2nd worldwide for open data
(sources: Open Data Maturity Report, OECD ranking)





OUR COMMITMENTS



Our softwares are developed in-house at our Paris headquarters. It is **100% French and GDPR compliant**.



All our data analysts have a dual background in social sciences and technology, enabling them to take a **pragmatic approach to our clients' business challenges**.



Our senior managers are highly committed to promoting **data awareness**. SPALLIAN regularly hosts seminars for elected officials' organisations and implements courses in various programs at Paris-Dauphine, Lyon III, and TBS, among others.

PATRONAGE AND SPONSORSHIP



IAN LIPINSKI

2015

Winner, Mini Transat (Series class)

2016

French Offshore Racing "Espoir" Champion (Mini class)

2017

Winner, Mini Transat (Prototype class)

2019

Winner, Transat Jacques Vabre (Class40) with Adrien Hardy

2023

Winner, Normandy Channel Race with Ambrogio Beccaria

2025

Winner, CIC Med Channel Race with Alberto Bona

EVAN GILTAIRE

Karting highlights

2018

Winner, Coupe de France (Cadet) at age 12

2021

Top French finisher at the World Championship

2022

-French Senior Champion, X30 Senior

-Winner, IAME World Final, X30 Senior

-Winner, SKUSA SuperNationals XXV (Las Vegas), X30 Senior

Single-seater highlights

2023

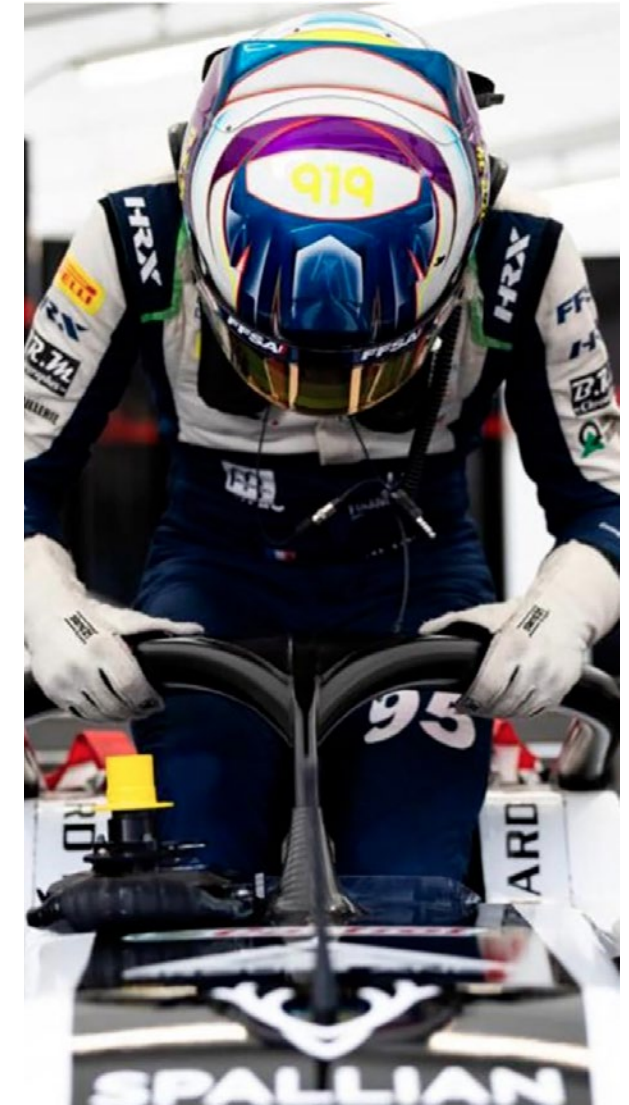
French F4 Champion (FFSA Academy) in his rookie single-seater season

2024

Joined the FRECA championship; multiple podiums

2025

Winner, Formula Regional Middle East Championship (FRMEC)



CONTACT

44 rue Chanzy - 75011 PARIS
+33 1 58 39 39 99

contact@spallian.com
www.spallian.com

Find our achievements on our data lab:
www.spallian.com/spallian-data-lab/



